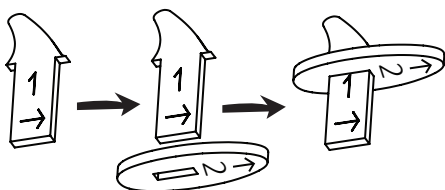
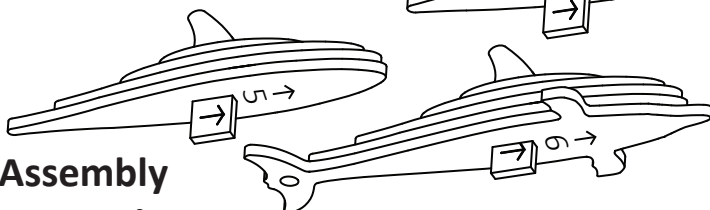
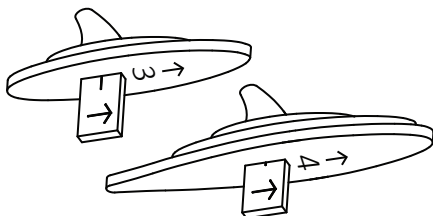


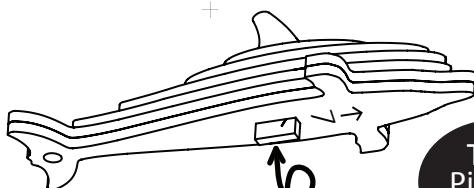
Slide piece 2 over piece 1 with the arrows pointing the same way.



Keep adding pieces 3, 4, 5, 6 and 7 with the arrows always pointing the same way.

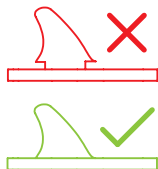
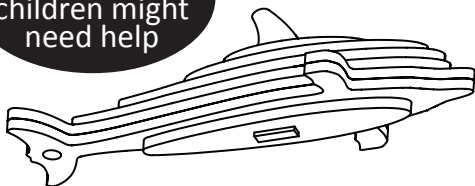


Assembly Instructions



Turn Piece 8 Over

Piece 8 is a tight fit, children might need help



Put the chain through the hole in the tail and loop through the ring. Fasten the chain and you are finished!

For online instructions that include GIFs and videos please visit:
www.stackamals.co.uk/dolphin-instructions